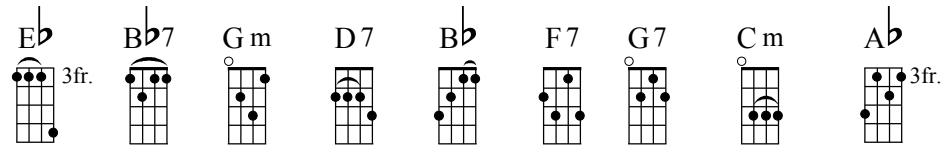


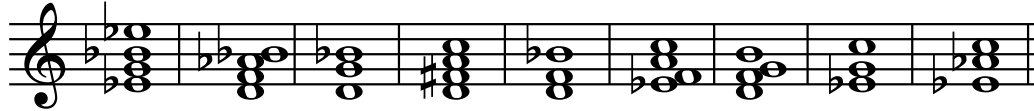
Funiculi Funicula

Italian version (original in the Neapolitan dialect)

Music by Luigi Denza



Chords used
in this song.



D = Down U = Up

Suggested
Strum Pattern

E_b
etc.

D U D U D U D U

Tonight, my Nina, we climb the mountain,
where an ungrateful heart can no
longer spite us. There is the blazing fire,
but if you flee it will not run after you,
nor consume you to look upon it.

Hurry, hurry, come to the mountain.

Sta - se - - - ra, Ni - na mia, io son mon - ta - to

6 $Bb7$ E_b $Bb7$ E_b

— Te lo di - ro? — Te lo di ro? — Co - lá —

12 $Bb7$ E_b

— do - ve di - spet - ti un cor in - gra - to — Più far non può —

17 $Bb7$ E_b Gm $D7$

— Più far non può — Co - la — co - cen - te è il

Funiculi Funicula - Page 2

22 G m D7 G m D7 G m D7 G m

fo - co, ma se fug - gi ——— Ti la - scia star ——— Ti la - scia star ———

28 B♭ F7 B♭ F7 B♭

— E non ——— ti cor - re ap - pres - so, e non ti strug - gi ———

33 F7 B♭ F7 B♭

— A ri - guar - dar, ——— A ri - guar - dar ———

38 B♭7

p Les - ti, les - ti, via montiam su la ——— les - ti, les - ti,

44 E♭ G7 C m G7

via mon-tiam su la, Fu-ni - cu - li, fu-ni - cu - la, fu-ni - cu - li, fu-ni - cu -

pp

49 C m A♭ E♭ B♭7 E♭

la, via, mon-tiam su la, fu-ni - cu - li, fu-ni - cu - la.

f

This song was originally written to promote the funicular (cable railway) that was completed in 1880 on the side of Mount Vesuvius to bring tourists to the top of the active volcano. The funicular was destroyed in 1943 by volcanic activity.